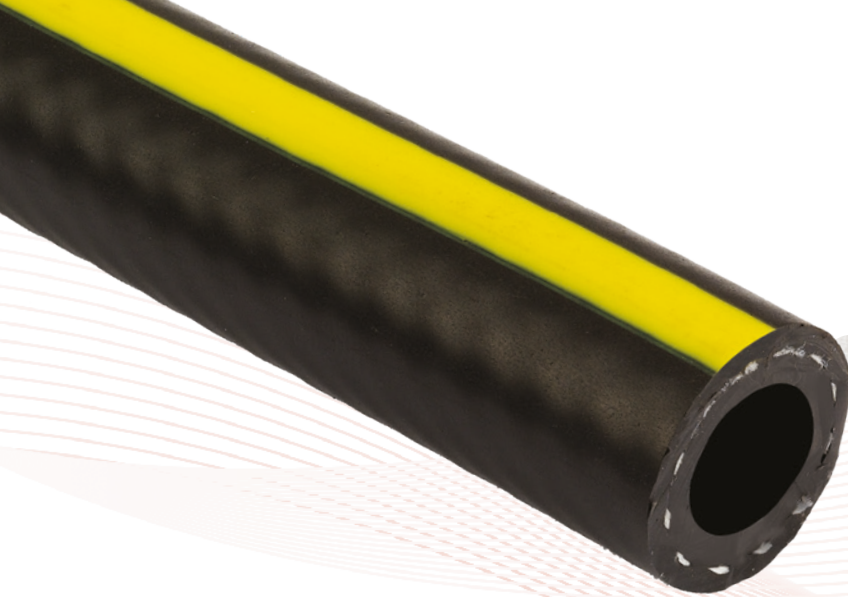


GRIFLEX

hose & ducting solutions



Also Available

- LAH - Lightweight Air Hose
- CMP - Compressor Hose
- ASH - Agricultural Spray Hose
- HN - Clear Braided PVC Hose



GPA

General Purpose Air Hose

Manufactured from a compound containing nitrile, offering excellent flexibility and kink resistance, the GPA range of multi-purpose flexible polyester reinforced PVC hose is ideal for general workshop use and air tools. Minimum frictional loss is achieved by the smooth bore.

Applications

The GPA range is ideally suited to compressed air applications in the industrial, construction and automotive sectors.

Construction

A high quality PVC core is bonded to a nitrile/PVC alloy cover encapsulating high tensile polyester fibres.

Colour

Standard - Black with Yellow Stripe

Other colours available subject to minimum order quantity

Temperature Range

-10°C to +60°C

In accordance with BS EN ISO 5774

Size Range

3/16" to 1"

Standard Length

30m and 100m Coils

Other lengths available subject to minimum order quantity

Special Features

- Tough, durable, excellent flexibility and kink resistance
- Outstanding resistance to the effects of weather
- Minimum frictional loss is achieved by the smooth bore
- Excellent chemical resistance
- Custom print on the strip subject to MOQ



GPA - General Purpose Air Hose

Product Ref.	Internal Dia. Inches	Internal Dia. mm	External Dia. mm	Wall Thickness Overall mm	Weight kg/m	Min. Bend Radius mm	Vacuum m of H ₂ O	Working Pressure Bar	Coil Length Metres
GPA5/13	3/16"	5	13.0	4.0	0.17	85	20	30 / 100	30 / 50
GPA6/14	1/4"	6.3	14.0	3.85	0.19	91	20	30 / 100	30 / 50
GPA8/16	5/16"	8	16.0	4.0	0.23	104	20	30 / 100	30 / 50
GPA10/18	3/8"	10	18.0	4	0.27	117	20	30 / 100	30 / 50
GPA13/22	1/2"	12.5	22.0	4.8	0.40	143	20	30 / 100	30 / 50
GPA16/25	5/8"	16	25.0	4.5	0.45	163	20	30 / 100	30 / 50
GPA19/29	3/4"	19	29.0	5.0	0.61	189	20	30 / 100	30 / 50
GPA25/37	1"	25	37.0	6	0.93	241	20	30 / 100	30 / 50

All sizes are nominal and normal manufacturing tolerances apply.

Special Sizes are available on request but may be subject to Minimum Order Quantities and Leadtimes.

- (i) Maximum working pressure is based on a factor of safety of 4:1 on short term burst pressure at 20°C. If the temperature increases, please refer to the temperature pressure charts.
- (ii) Lengths detailed above are as standard, however variations may be available subject to minimum order quantities. Weights are approximate dependent upon working tolerance and density of materials.
- (iii) Bending diameter information is intended as a guide to the minimum bend radius at 20°C ambient temperature without restricting the bore. It does not mean that the hose cannot be bent below the given dimensions but restriction is likely to occur.

